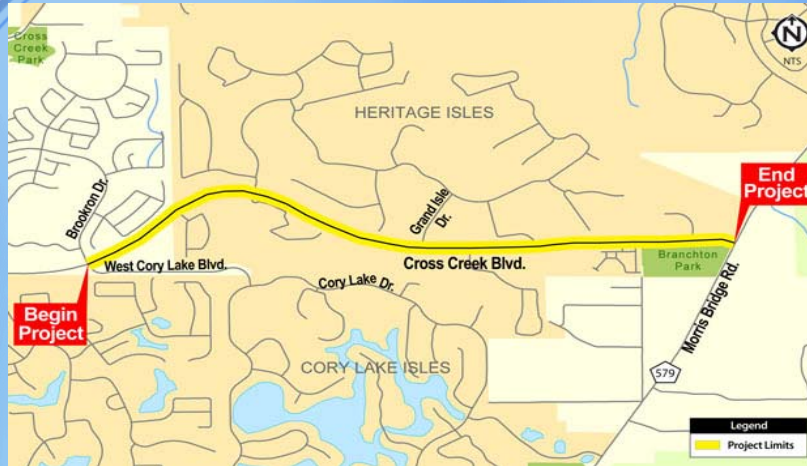


CROSS CREEK BOULEVARD (W. Cory Lake Blvd. to Morris Bridge Rd.)

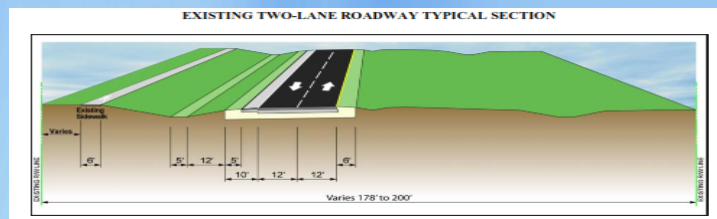


Project Description

An existing 2-lane, undivided collector road,
(approximately 2.3 miles long)

that will be widened to a

4-lane divided rural section (without curbs)



Project Components

- 6' wide Sidewalk
- 12' wide Multi-Use Trail
- 5' wide Bicycle Lanes
- 22' wide Median
with additional turn and storage lanes
- New Traffic Signal
at West Cory Lake Blvd. / Brookron Drive



Wildlife

- Eastern Indigo Snake
- Sandhill Crane
- Gopher Tortoise
- Bald Eagle

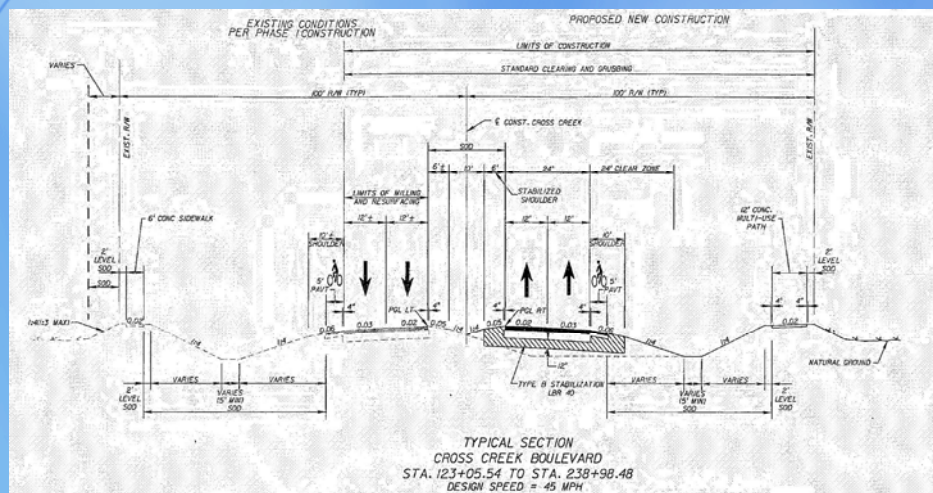


Utility Owners

- TECO Energy – underground & lighting
- TECO/Peoples Gas – 4" steel gas main
- Verizon – Fiber Optic lines, ducts, cables
- City of Tampa – Fire Hydrant relocates on 20" D.I.P. (To Remain)



Typical Cross Section

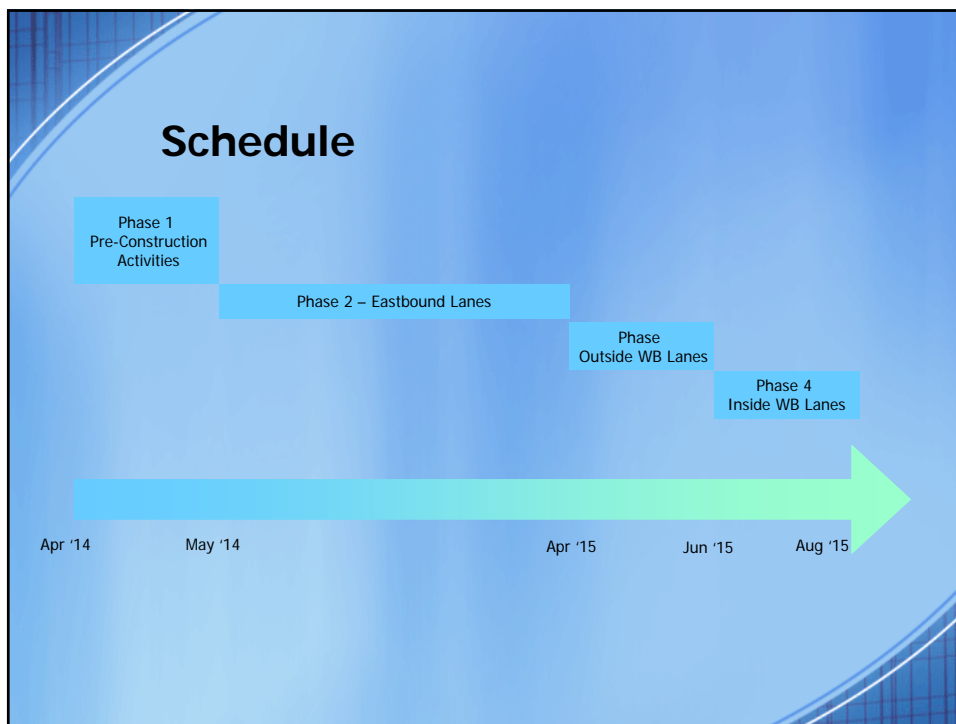


Project Budget

| Source | Amount |
|--|--------------|
| City University North Impact Fees (Project #0000307) | \$ 2,013,568 |
| FDOT Work Program (PD&E & Design) | \$ 1,338,882 |
| Hillsborough County Interlocal Agreement | \$ 1,500,000 |

Project Costs

| Phase | Consultant | Cost Estimate* |
|--------------|-------------------------------------|----------------|
| PD&E | URS | \$ 439,000 |
| Design | Heidt Design, LLC | \$ 830,000 |
| Construction | Kamminga & Roodvoets, Inc. (K&R) | \$ 4.8 Million |
| Post -Design | Heidt Design, LLC | \$ 10,000 |



- ### Future Project: Intelligent Transportation System (ITS) (Bruce B Downs to Morris Bridge Road)
- Concrete Poles
 - CCTV Cameras
(BB Downs, Kinnan, Morris Bridge)
 - Wireless Communications
 - Controller Assemblies
 - Signal Interconnects

Thank You

