

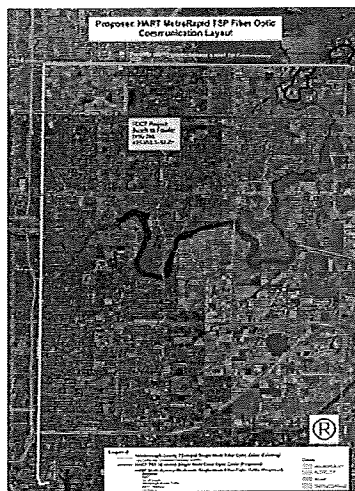
MetroRapid North-South

- Stations - 58
 - Size based on ridership
 - Totem
 - Passenger information
 - Ticket vending machines
 - Larger stations
 - Future option
 - Real time travel information
 - Bicycle racks, benches, advertising panels
- Buses – 14 (40 foot)
 - Dec 2011 contract award

HART
www.goHART.org

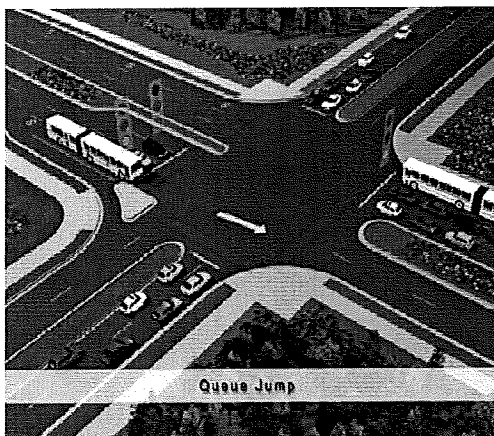
MetroRapid North-South

- Fiber Communication
 - Supports transit signal priority and TVM
 - Increased Reliability
 - Cost Effective – lower maintenance costs



Queue Jump Lane Fletcher/50th St.

- Separate lane for buses; westbound direction
- Signal provides advance green for buses



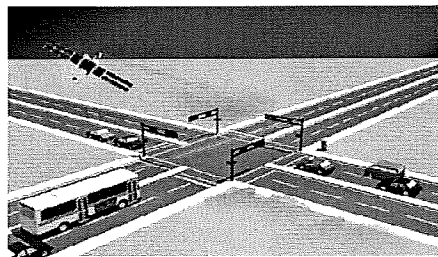
MetroRapid North-South

- **Budget**
 - \$31 million – Hillsborough County CIT
- **Schedule**
 - 100% Final Design – Dec 2011
 - Property Acquisition – Oct 2011 – May 2012
 - Construction Procurement – March 2012
 - HART Committee/Board – May/June 2012
 - Construction – June 2012 – Feb 2013



Transit Signal Priority

- **Technology to extend the green light or shorten the red light at traffic signals**
 - Improve schedule reliability
 - Reduce bus travel time
 - Increase attractiveness of transit



Transit Signal Priority

- Pilot Project under Finalization
 - Extensive coordination with City, County, FDOT
 - Confirmed technology, location and conditions
 - Global Positioning Satellite (GPS)
 - Nebraska: Twiggs St. – Floribraska
 - Fletcher Avenue: Nebraska – 56th St.
 - Procurements under refinement
 - City, County, FDOT – signal equipment
 - HART – bus equipment
 - Schedule
 - June – July 2012 – Testing
 - August 2012 – Final Report
- Implementation on other bus routes
 - Based on funding availability



Fletcher Park-and-Ride

- New facility to serve *MetroRapid* North-South in vicinity of I-75 and Fletcher
- Paved lot, shelters, lighting
- \$1.75 million budget
 - County CIT funding
- Property negotiations underway



Rendering Courtesy of MPO



Pedestrian Improvements – NNTA Area

- *MetroRapid* NS intersection improvements
 - Stations, pedestrian connections, improved crosswalks on Fletcher Avenue
 - 50 Street included
- Pedestrian improvements along 50 St (south of Fletcher)
 - Linebaugh – Fletcher
 - Targetting County Impact Fees



Transit Shelters

- Upcoming shelters in NNTA area
 - Moffitt Medical Center (Magnolia Dr @USF Citrus)
 - 22nd Street – Club Drive @ Fletcher
 - Davis Rd and Cristi Court (south of Fowler)
 - Bruce B Downs Blvd south of Bearss

