

**Hillsborough County
Pedestrian Safety Action Plan**

**Community Traffic Safety Team
Subcommittee**

**Presentation for
New North Transportation
Alliance**

September 9, 2009

HILLSBOROUGH COUNTY PEDESTRIAN SAFETY ACTION PLAN

Hillsborough County Public Works

Florida Department of Transportation

Tampa Safe Kids

University of South Florida

HART

BEARSS AVE.

NEBRASKA AVE.



56th STREET

BUSCH BLVD.

City of Tampa Transportation

City of Temple Terrace

Hillsborough County School District

Hillsborough County Sheriff's Office

New North Transportation Alliance

COMMUNITY TRAFFIC SAFETY TEAM SUBCOMMITTEE

Subcommittee Members

Hillsborough County Public Works – Gary Tait, Robert Wood

Tampa Safe Kids Coalition – Bevin Maynard

Florida Department of Transportation – Jeanette Rouse, David Skrelunas

University of South Florida – Jason Jackman

City of Tampa –

New North Transportation Alliance – Sara Hendricks

Hillsborough County Sheriff's Office – Corp. Jim Antoniadis, Todd O'Heir

City of Temple Terrace – Brad Parrish, Tom Moore

Hillsborough School District - Dave Borisenko

Tindale Oliver – Laura Everitt

HART -

Study Area

North Boundary – Bearss Avenue

East Boundary – 56th Street

South Boundary – Busch Boulevard

West Boundary – Nebraska Avenue

Activities

- Identified Pedestrian Generators
(School, Stores, Churches, Parks, and Hospitals)

- Reviewed plotted Pedestrian Crashes
(Sex, Race, and Age for 2004 – 2008)

- Learned 131st Avenue is of concern
(Looking at lighting, signs, and markings)

- Learned 56th Street needs more Pedestrian
Countdown Signals

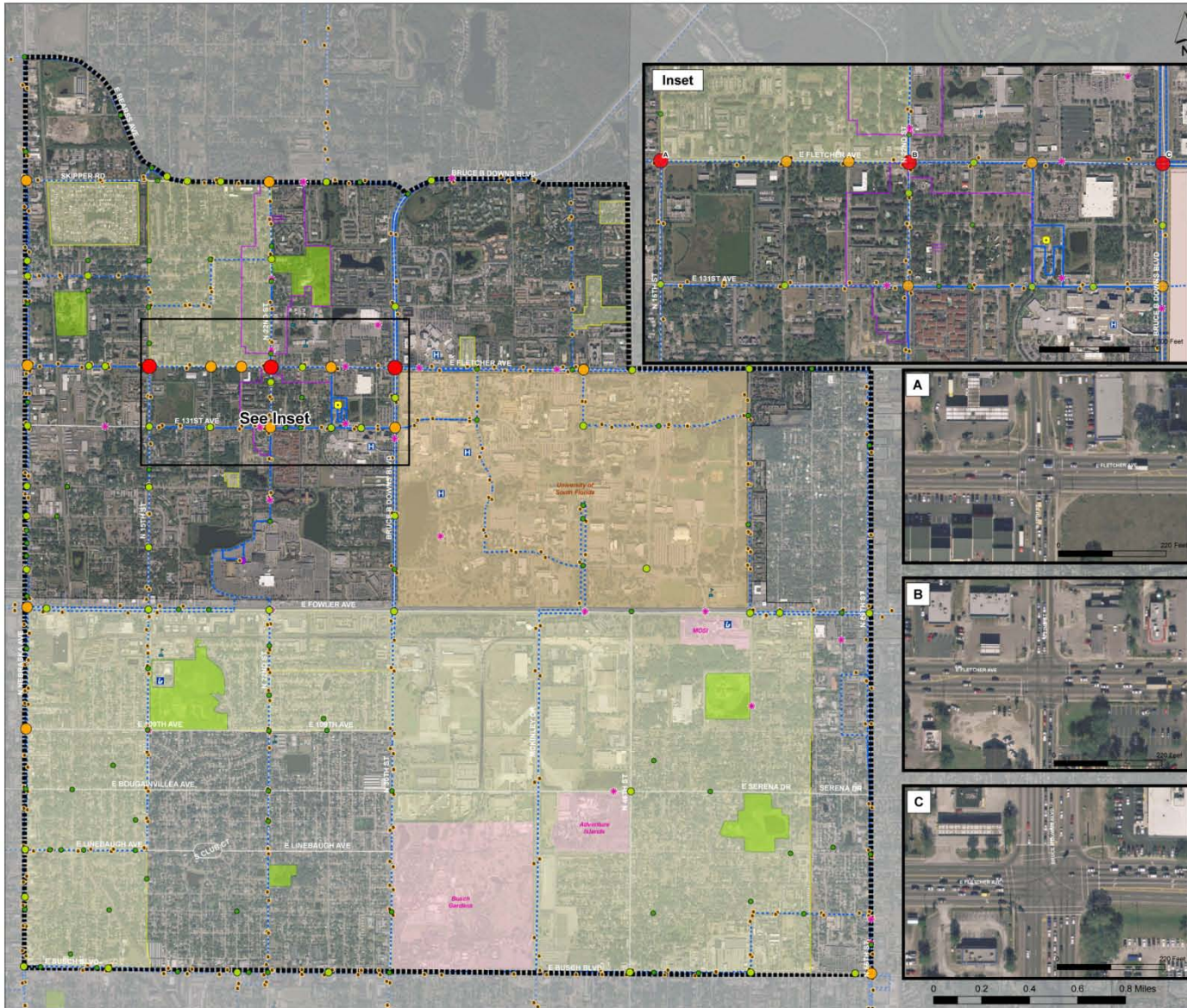
(FDOT, County and Temple Terrace working together)

- Distribution of Safety materials

- Attach Pedestrian Safety posters to traffic signal
controller boxes

- Provide Pedestrian Safety Education at schools

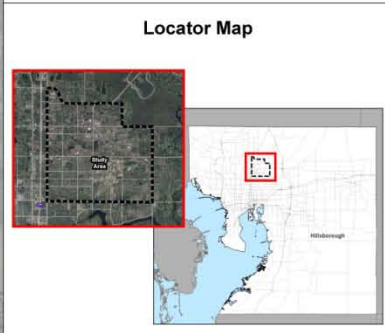
- Look at Transit stop locations



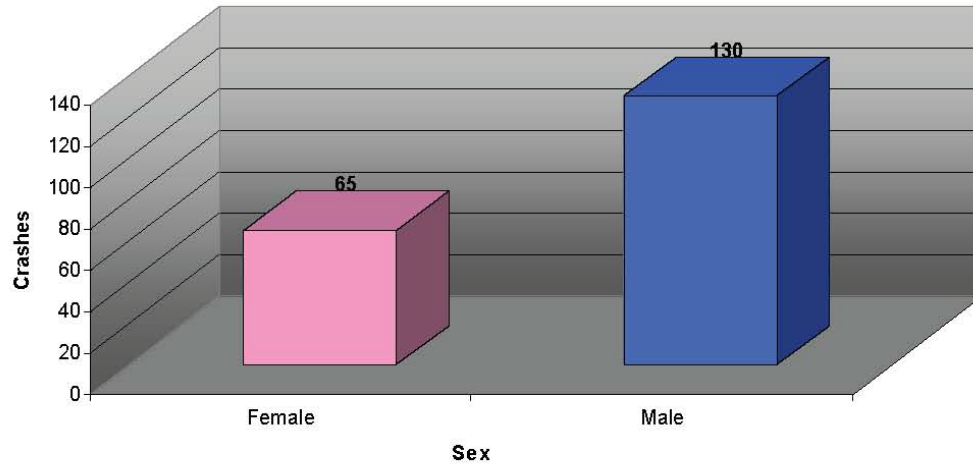

**Hillsborough County
 Pedestrian Safety Action Plan
 Study Area
 Map 1
 Pedestrian Crashes**

- Legend**
- 2004 - 2008 Pedestrian Crashes**
- 1 Crash
 - 6 - 10 Crashes
 - 2 - 5 Crashes
 - > 10 Crashes

- Base Map Layers**
- | | |
|---------------------------|-------------------|
| ▭ Study Area | ⚪ School |
| ▭ Special Zoning District | ⚪ Library |
| ▭ Parks | ⚪ Transit Center |
| ▭ USF | ⚪ Transfer Center |
| ▭ Attractions | ⚪ Transit Routes |
| ▭ Neighborhoods | ⚪ Major Roads |
| ▭ Municipal Limits | ⚪ Local Streets |
| ⚪ Hospital | ⚪ Railroad |
| ⚪ Activity Centers | ⚪ Bus Stops |

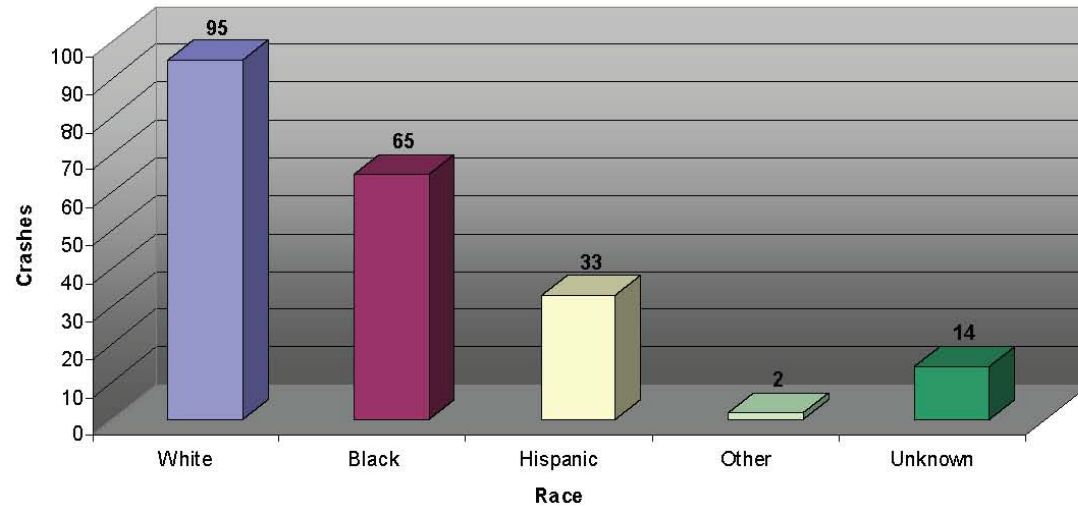


Study Area Pedestrian Crashes by Sex

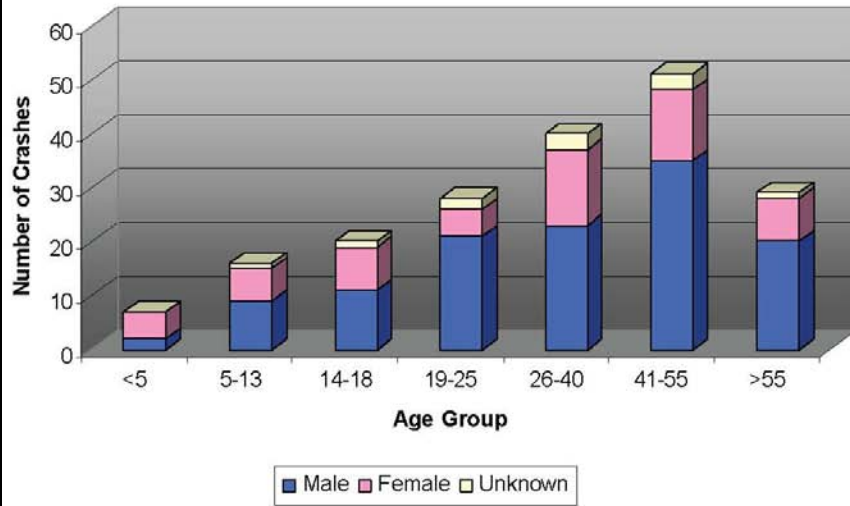


Data: Crash records for University Study Area for January 1, 2004 to December 31, 2008. Only 209 of the 351 crash records had data available on age, sex, and race.

Study Area Pedestrian Crashes by Race

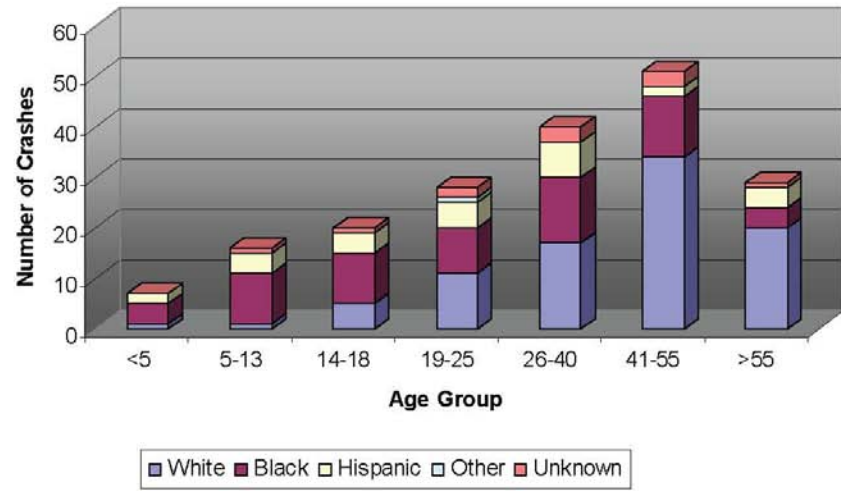


Pedestrian Crashes by Age and Sex



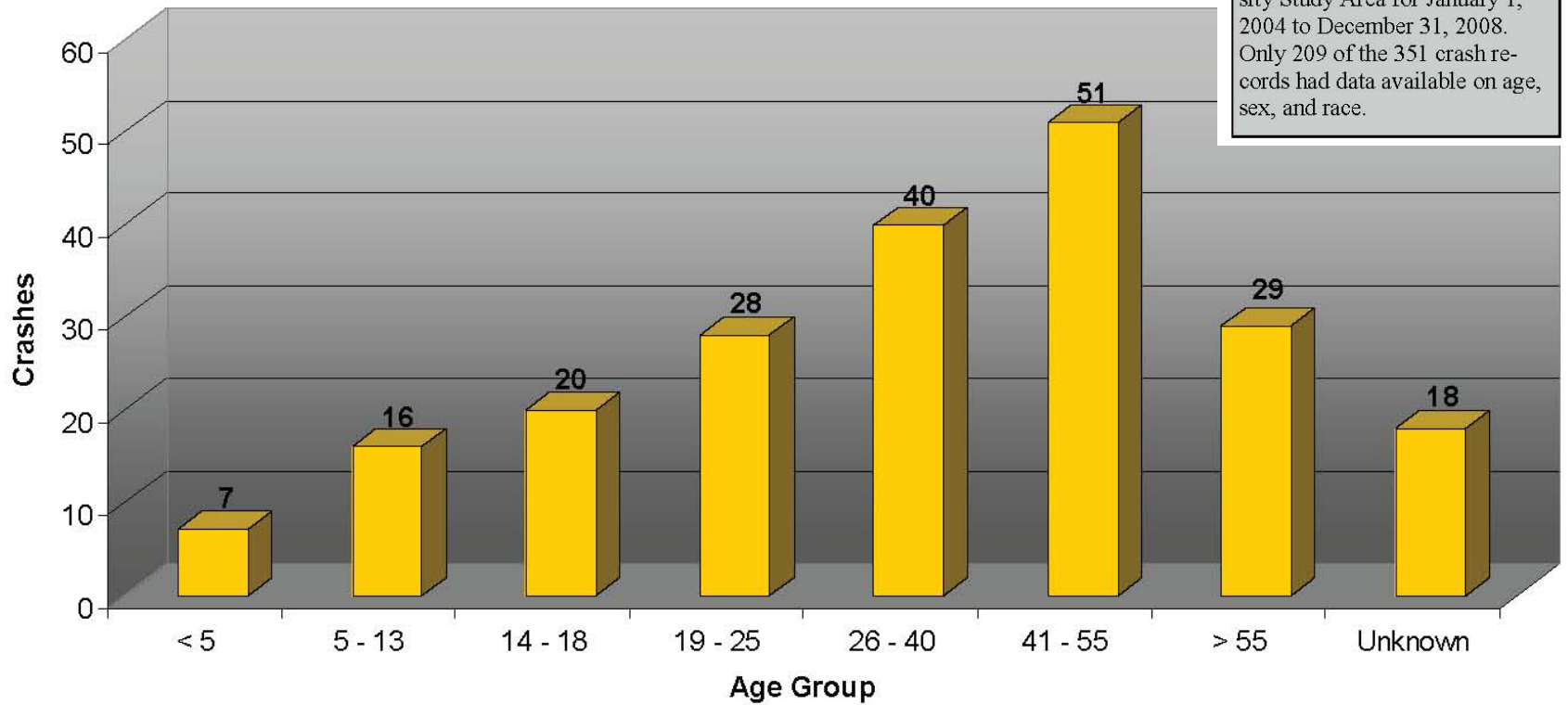
Data: Crash records for University Study Area for January 1, 2004 to December 31, 2008. Only 209 of the 351 crash records had data available on age, sex, and race.

Pedestrian Crashes by Age and Race



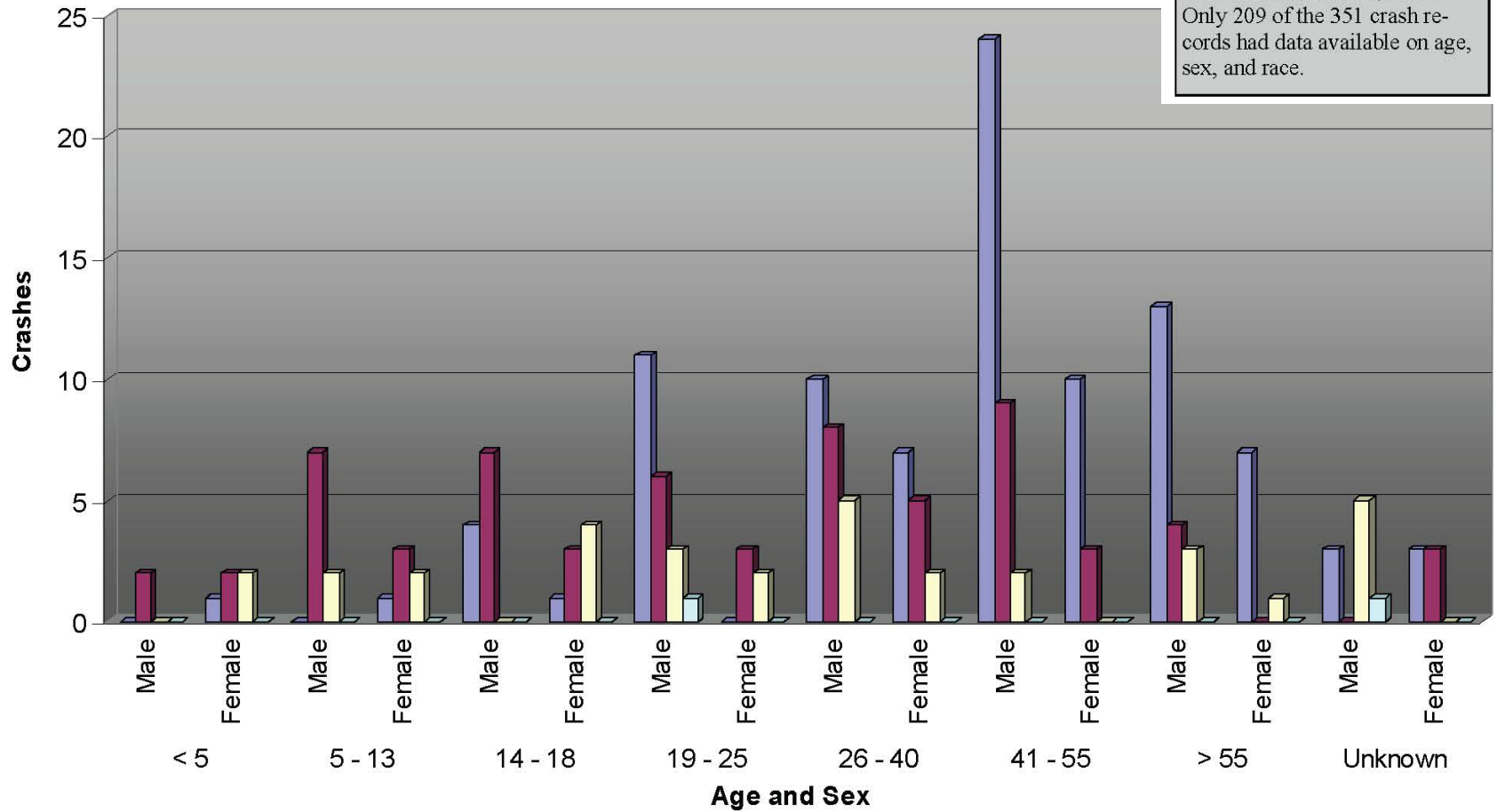
Study Area Pedestrian Crashes by Age

Data: Crash records for University Study Area for January 1, 2004 to December 31, 2008. Only 209 of the 351 crash records had data available on age, sex, and race.



Pedestrian Crashes by Age, Sex, and Race

Data: Crash records for University Study Area for January 1, 2004 to December 31, 2008. Only 209 of the 351 crash records had data available on age, sex, and race.



White Black Hispanic Other

Contact information

Gary S. Tait

Manager of Bicycle, Motorcycle, Pedestrian and
School Safety Programs
Hillsborough County Public Works
Traffic Services Division

307-1871

taitg@hillsboroughcounty.org